

DECODE Study

Easy Read Summary version 1.0 13/01/2021



Around one in 100 people in the UK have a learning disability



People with learning disabilities may also have other difficulties, such as hearing problems....



diabetes ...



epilepsy...



.. or cerebral palsy



Some people with a learning disability may have two or more health problems.

We call this '**multiple long-term conditions**'.



We want to learn more about these long-term conditions in people with learning disabilities.



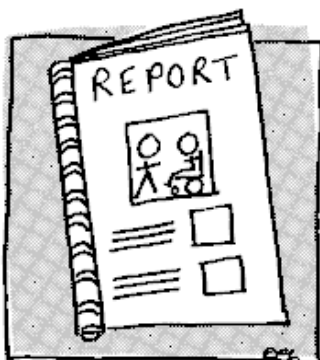
We want to know what can help people with these difficulties.



We want to use computer programs to help us learn about these conditions.

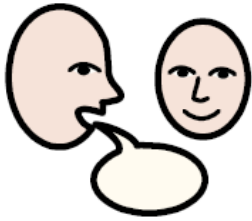


We want to learn whether eating healthy food and exercising can help to not have 'multiple long-term conditions'.



What we will do

We will look at what other people have learnt about people with learning disabilities and 'multiple long-term conditions'.



We will talk to people with learning disabilities and their carers.



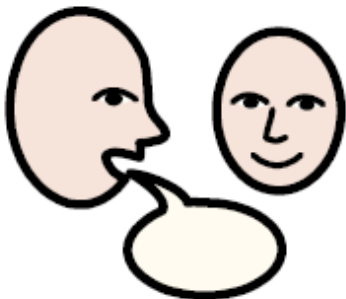
We will talk to experts about how to use computers to help us.



We will use computers to help us learn more about people with learning disabilities and 'multiple long-term conditions'.



We will also look at how computers can be used to help people with learning disabilities and 'multiple long-term conditions'.



How we will tell people about our study

We will talk to a lot of experts.

We will talk to people with learning disabilities.

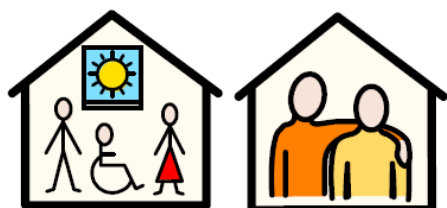


Charities such as MenCap, Sense, and the National Carers Society will help us to tell people about our study.

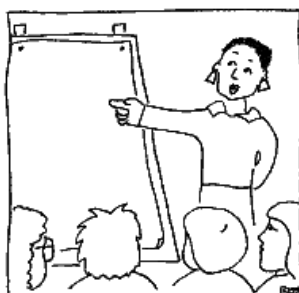


Patient and Public Involvement

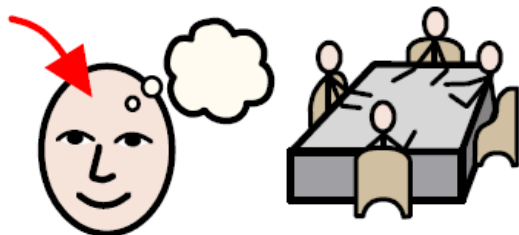
The "Talk and Listen Group" for people with learning disabilities will help us.



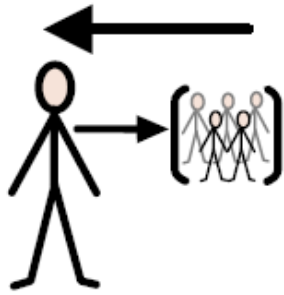
We will put up posters about our study in day centres and care homes for people with learning disabilities.



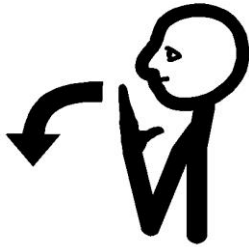
We will ask people to talk to us if they want to hear about our study.



We will hold a 'knowledge' café and ask people to visit us to hear about our study.



We will invite everyone
who talks to us to be
involved in our study.



Thank you!



The DECODE team
Leicestershire Partnership
NHS Trust, Loughborough
University, and University
of Leicester

Our Public Involvement
Lead is Reza Kiani
reza.kiani@leicspart.nhs.uk